



# Summer 2010

## Helpful Resources and Fun Activities for White Center/Boulevard Park Families

The **White Center Early Learning Initiative (WCELI)** is a partnership of community members and public and private organizations working to help all children in White Center/Boulevard Park begin school ready to succeed. The partnership is supported by grants from Thrive by Five Washington and the Bill & Melinda Gates Foundation.

## Free WCELI Services for Families

### If you need to locate child care in King County...

*Services Include:*

A resource specialist to assist parents in finding child care including before and after school, non-standard hours, part-time and drop-in, for children with special needs, or in your language.

**For more information**, call the Child Care Resources Information and Referral Line: (206) 329-5544.

### If you are looking for preschool programs...

Now enrolling for fall: Half-day and full-day Head Start and Educare classrooms for 3 and 4 year olds and home-based Early Head Start for infants and toddlers. Call for details and eligibility information.

**For more information**, call (206) 716-8800 or visit the Educare Early Learning Center, 625 SW 100th St., to apply.



### If you are pregnant or have a newborn baby...

*Services Include:*

A home visit by a healthcare professional during your pregnancy, after your baby is born and until your baby turns two years old.

Access to a social worker or a nutritionist if you have questions.

**For more information**, contact Lois Schipper, White Center Public Health Center, (206) 205-7273, 10821 8th Ave. SW.

Doula services to provide extra support to you and your family before, during and in the few weeks after your baby is born.

**For more information**, contact Open Arms Perinatal Services, (206) 723-6868, 906 SW Trenton St.

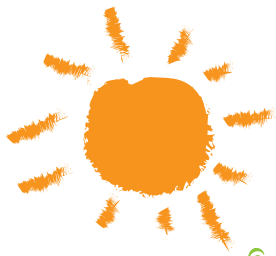
**For more information on WCELI, visit [www.wceli.org](http://www.wceli.org) or call (206) 716-8851**

## Did You Know?



### The first years of a child's life are incredibly important

- About 85 percent of the human brain develops in the first three years of life.
- From birth, children need to be read and talked to, cuddled and hugged. They need access to healthy food and medical care. They need places to run, jump and use their imaginations.
- Children who have nurturing, healthy and supportive experiences in their early years are much better prepared to succeed in school and life.
- Kids gather the building blocks for school readiness long before they enter the kindergarten classroom.



# FREE



## Community Activities for Families

### Play and Learn Groups

Are you a family member, friend or neighbor caring for young children in your home? You are invited to participate in FREE, drop-in Play & Learn Groups. Children play and learn together in groups that are led by a qualified facilitator.

#### Mondays

10:00–11:30 a.m. in Spanish  
YWCA, 9720 8th Ave SW, (206) 826-8932

#### Tuesdays

9:30–11:00 a.m. in English/Multi-cultural  
White Center Heights Elementary School,  
10015 6th Ave SW, (206) 433-2244  
5:00 – 6:30 p.m. in Spanish  
Educare Early Learning Center, 625 SW  
100th St, (206) 716-8855

#### Wednesdays

10:00 a.m.–Noon in English/Spanish  
Woodridge Park Apartments, 12420 28th  
Ave S., (206) 242-2207

#### Thursdays

10:00 –11:30 a.m. in English/Vietnamese  
Educare Early Learning Center

#### Fridays

9:30 - 11:00 a.m. in English/Multi-cultural  
White Center Heights Elementary School  
10:30 a.m.–Noon in Vietnamese  
Educare Early Learning Center  
4:00–5:30 p.m. in Purépecha  
El Dios Viviente Iglesia Metodista Unida,  
9001 9th Ave SW, (206) 826-8932

#### Saturdays

10:00–11:30 a.m. in Purépecha  
The Community School of West Seattle,  
9450 22nd Ave SW, (206) 826-8932

### Wednesdays with WCELI

Join other families over coffee and tea to discuss early learning topics and resources. Activities are provided for children ages 2 - 5, interpretation available. Meetings take place on the third Wednesday of each month, from 9:00–10:00 a.m. Questions? Call (206) 716-8800.

Next Meetings: July 21 and August 18,  
Educare Early Learning Center

### Museum of Flight:

Wells Fargo Free Thursday  
The museum stays open late—for free! Enjoy the museum's great gallery, Personal Courage wing, Space: Exploring the New Frontier exhibit, flight simulators and more, courtesy of Wells Fargo.

August 5, 2010; 5:00–9:00 p.m.  
Museum of Flight, 9404 East Marginal  
Way S., (206) 764-5720

### Fiestas de Alfabetizacion Temprana en Español–Early Literacy Parties in Spanish

Families receive information about early literacy, free books in Spanish, craft materials, snacks and the opportunity to socialize with other Spanish speaking families.

July 19, 26; August 2, 9, 16, 23; 10:30  
a.m.–Noon at the Burien Library, 400 SW  
152nd St., Burien  
(425) 369-3443, [tlcid@kcls.org](mailto:tlcid@kcls.org), or visit  
[www.kcls.org](http://www.kcls.org).

### Library Events

Join us for the King County Public Library's Annual Summer Readers' Program! Activities change every week.

*Tuesdays, 11:15 a.m.*

Boulevard Park Library, 12015 Roseburg  
Ave. S., (206) 342-8662

*Thursdays, 7:00 p.m.*

White Center Library, 11220 16th Ave. SW,  
(206) 243-0233

And don't miss Family Story Time, 30 minutes of books, songs, rhymes and silliness for ages 2-6 with an adult. Siblings welcome!

*Tuesdays at 6:00 p.m. in Vietnamese*

*Wednesdays at 6:30 p.m.*

White Center Library

*Wednesdays at 2 p.m.*

Greenbridge Library, 9720 8th Ave. SW,  
(206) 762-1682

*Wednesdays at 6:30 p.m.*

Boulevard Park Library

### Friday Night Movies

See free movies in the park, sponsored by Burien Parks, Recreation and Cultural Services. Movies start at dusk (around 8:30 p.m.).

August 20: Tale of Despereaux

August 21: Ratatouille

Lake Burien School Park

16th Ave SW & SW 148th, Burien, (206)  
988-3700

### Kids Bowl Free

Kids can bowl up to two games free per day, every day through September 13 at Roxbury Lanes, Magic lanes, and Hi-Line Lanes. Free shoe rental included! Visit [www.kidsbowlfree.com](http://www.kidsbowlfree.com) for details and enrollment.